

FRONT

BACK

FUNSKOOL

3+

Summer GARDENING



INSTRUCTIONS

The Ultimate garden themed playset with Fundough!
Role-play as a gardener while you plough, water and harvest your own homegrown veggies.

CONTENTS:

- Garden Base - 1 no.
- Watering can with plunger (to be assembled) - 1 no.
- Farm gate and wall column (to be assembled) - 1 no.
- Vegetable mould - 1 no.
- Scissors - 1 no.
- Rake - 1 no.
- Shovel - 1 no.
- Fence cutter - 1 no.
- Tree branches - 2 nos.
- Fundough knife - 1 no.
- Extruder with strip - 1 no.
- Vegetable placards - 6 nos.
- Fundough tubs (125 g each) - 5 nos.

USING THE VEGETABLE MOULD:

Make cabbage, corn, peas, capsicum, brinjal and carrot using the vegetable mould. To make any of the above, take dough of any colour and press the dough in the respective moulds. Fill the mould upto the brim and take off any excess dough. (Refer Fig. 1) To mould 3D forms (brinjal and carrot), you need to put enough dough of any colour and press the two mould halves together to get the desired vegetable. (Refer Fig. 2). To take the dough out, make another small ball of dough, press it against the formed dough and gently lift. Use the dough knife to give details to the final forms. Make all the vegetables.

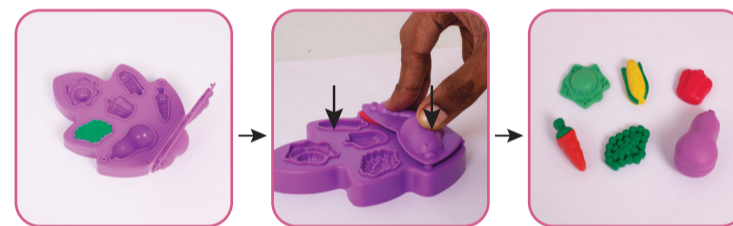


Fig 1.

Fig 2.

ADDING THE VEGATABLES AND PLACARDS ON THE GARDEN BASE :

Place the formed vegetables in each patch of the garden base according to the size of the holes. (Refer Fig. 3) Also insert the correct placard corresponding to the vegetable patch in the slits given on the garden base. (Refer Fig. 4)

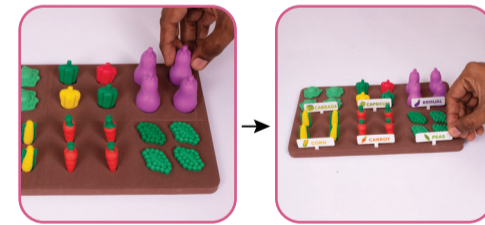


Fig 3.

Fig 4.

MAKING TREES :

There are two tree branches provided in this kit. Shape the dough in the form of a ball and add it to the branches of the trees. Make a small ball of dough and place the tree on it. Add the trees around your garden. (Refer Fig.5)

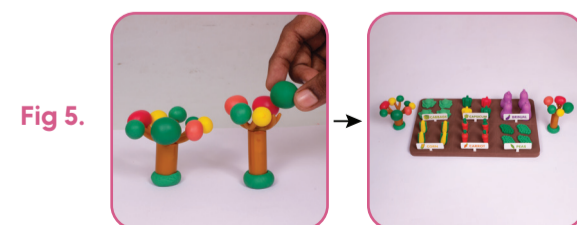


Fig 5.

USING THE FENCE CUTTER:

Press the fence cutter on flattened out dough. Remove the excess dough from all the sides, if any. Lift the fence cutter to reveal your formed fence. Create a series of fences and place it all around your garden base. (Refer Fig. 6)

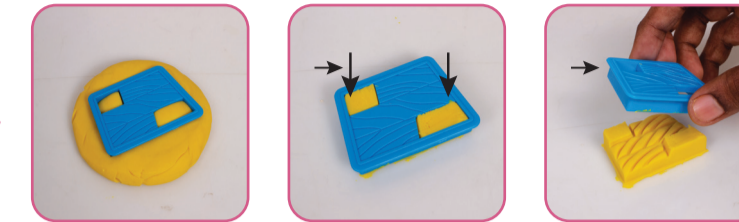


Fig 6.

INSTALLING THE GATE TO YOUR GARDEN:

Fit the farm gate into the wall column provided as shown. Make a small ball of dough and fix the gate column on ball and place it between any two fences. (Refer Fig. 7)

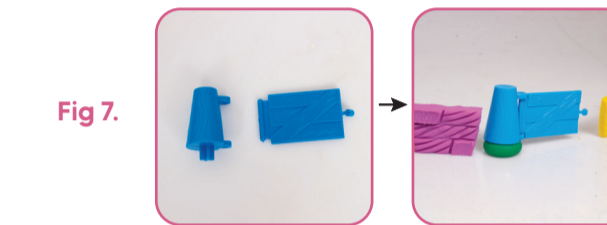


Fig 7.

USING THE EXTRUDER:

Add the slide into the slot provided on the extruder. Remove the plunger and drop in a suitable sized ball of dough into the extruder. Slide the slider to bring the shape you want at the center. Now insert the plunger and press it well to extrude the dough. Cut the dough when you're happy with the length and use it to decorate on or around your vegetable garden. (Refer Fig.8)

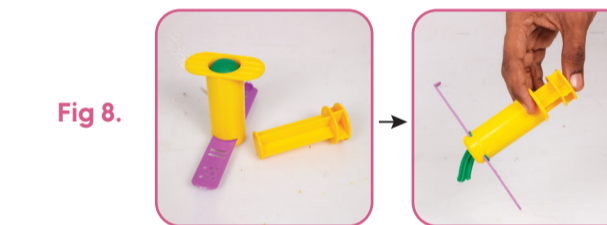


Fig 8.

USING THE WATERING CAN:

Add a suitable sized ball of dough onto the spout of the watering can. Insert the plunger and watch the dough extrude much like water from a watering can. (Refer Fig. 9) You can also mould various shapes like butterfly, ladybug, snail and mushroom with the watering can body. (Refer Fig. 10) Simply fill up the mould with a ball of dough and press it with the dough knife. Use another small piece of dough, press it against the formed dough and lift gently to reveal your creation.

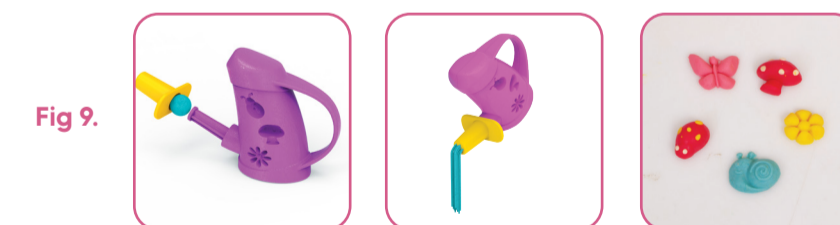


Fig 9.

Fig 10.

OTHER TOOLS PROVIDED IN THE KIT:

The shovel and rake provided in this kit can be used for roleplay for ploughing and harvesting the vegetables. Additionally, there is a dough knife and scissors provided which can be used to trim and shape dough.

NOW YOU ARE ALL SET FOR A FUN, GARDEN THEMED PLAYDAY!