

Siren Light:

- Fill in the grooves of the transparent plastic Siren Light with different colours of dough. Remove the excess dough and then place it on the Driver's Cabin Top (Fig. 13).
- Truck Head lights can also be filled with coloured dough of your choice (Fig. 14).



Fig. 13



Fig. 14

Setting the Scene:

Now that you have made all your dough elements, you can set up a Fire rescue scene and go on rescue adventures with the Fundough Fire Rescue!



HAPPY RESCUING!

FUNSKOOL

3+



INSTRUCTIONS



— It's Time To Save The Day! —

Get ready for a rescue adventure with the Fundough Fire Rescue!

Mould Fireman, Walkie-talkies, Fire extinguishers, Water hoses and more with colourful dough

Set up your Fire scene and start rescuing!

Contents:

- | | | | |
|----------------------------|-------|----------------------------|--------|
| • Fire rescue unit | 1 no. | • Extruder strip | 1 no. |
| • Fireman mould (2 halves) | 1 no. | • Fundough knife | 1 no. |
| • Siren lights | 1 no. | • Fundough tubs (50g each) | 4 nos. |

Setting Up:

- Place the Siren Light on the slot provided on the top of the Fire Rescue Unit. Insert the Extruder Strip through the slot on the back of the Fire Rescue (Fig. 1).



Fig. 1

Let's Play:

Extruding Fireman's Essentials:

- Make a ball of suitable sized dough (Fig. 2) and place it in the extruder press cavity (lift extruder handle fully to access this cavity). Slide the Extruder strip till desired shape is in alignment with the opening.
- Press the handle to extrude the selected shape (Fig. 3). To prevent the front wheels of the vehicles from lifting up during the extruding process, gently hold the fold of the Fire Rescue with one hand as you press the extruder with the other hand.
- You can use these extruder shapes to create a typical fire rescue scene. Water hoses, gushing water, ladder danger sign and more can be made with the extruder strip.



Fig. 2



Fig. 3

Moulding the Firemen:

- Make a dough ball of suitable sized dough (Fig. 4).
- Press and distribute the dough into both halves of the Fireman mould. Press the two halves of the mould using the pin and holes as guidance (Fig. 5).
- Carefully open up the mould and clean the extra dough outside/around the formed dough fireman (Fig. 6).
- Lift the Fireman out of the mould. You can further decorate the fireman using other colours of dough (Fig. 7).

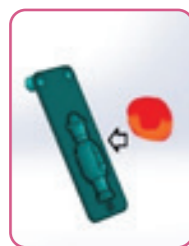


Fig. 4

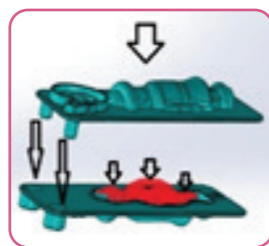


Fig. 5

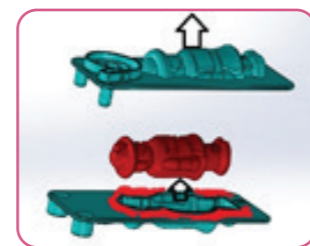


Fig. 6



Fig. 7

2

- You can also mould coiled Fire Hoses (Fig. 8) and a Fireman's Badge (Fig. 9) from the 3D moulds of the Fireman.



Fig. 8



Fig. 9

Moulding Fireman's Essentials:

- Moulds are also provided on various places of the Fire Rescue's body. Moulds for Fireman's axe, walkie-talkie and fire extinguisher are provided on top of the Drivers cabin (Fig. 10).

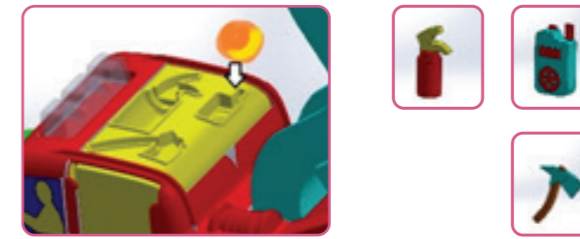


Fig. 10

- Mould for ladder, fire, whistle and bull-horn area provided on the extruder handle (Fig. 11). To make a full ladder you need to mould parts of the ladder and join them together.



Fig. 11

- You can also mould a Fire Hydrant with the mould that is provided below the bonnet (Fig. 12).



Fig. 12

3